



INDOOR AIR QUALITY

PRODUCT GUIDE

www.mingledorffs.com



All information provided in this catalog is for informational purposes only and is subject to change without notice. While we strive for accuracy, we do not guarantee the completeness, reliability, or currentness of the content. Product dimensions and technical data should be verified with the manufacturer or sales team prior to ordering.

TABLE OF CONTENTS

SmartIAQ.....	3
Ion Distribution Fan.....	4
Ionization Systems.....	5-10
Accessories.....	11-13

All information provided in this catalog is for informational purposes only and is subject to change without notice. While we strive for accuracy, we do not guarantee the completeness, reliability, or currentness of the content. Product dimensions and technical data should be verified with the manufacturer or sales team prior to ordering.



SMARTIAQ®

[Click for more info on Indoor Air Quality](#)

SIAQ1-AQPROC | SMARTIAQ® AIR QUALITY PROCESSOR

The Air Quality Processor (AQP) is a separately purchased accessory for smartIAQ. It performs air quality monitoring and data logging. Powered by a USB-C connection, the AQP is an easy way to see air quality and the impact smartIAQ® will have on improving the air. Air quality used to be hard to monitor - not anymore. AQP makes the invisible, visible.



The advanced self-calibrating sensors allows the system to monitor for ASHRAE Standard 62.1 contaminants of concern including: TVOCs, CO2, HCHO, NOX, and Particles (PM1.0, PM2.5, PM4.0, PM10). Everything that ASHRAE says should be monitored and controlled in indoor air is measured here. 15 different VOC's along with 4 different PM sizes, Formaldehyde, CO2, Temp and Humidity. Take this out on a sales call and set it up to monitor and generate a report for your customer. It can also be used to show that the installed smartIAQ® system is working.

HIGHLIGHTS

- Intelligent Air Quality Sensor & Controller
- Particle & Carbon Molecular Filters
- Quiet & Efficient EC Blower Fan
- Self-Cleaning NPBI® Module

[BUY NOW](#)

ION DISTRIBUTION FAN

[Click for more info on the Ion Distribution Fan](#)

IDF-2® | CEILING-MOUNTED ION DISTRIBUTION FAN

The IDF-2® is a low-profile, quiet operation ceiling tile fan with NPBI® soft ionization technology directly integrated.

HIGHLIGHTS

- Designed to fit commercial drop / suspended ceilings using a standard 24" x 24" tile footprint
- High efficiency brushless fan motor
- Revolving diffuser ensures an even introduction of ions for optimal in-space concentration levels
- Easy to install
- Ideally suited to spaces such as conference rooms, classrooms, and open-plan offices

SPECIFICATIONS

- Ionizer Total Ion Output: >160M ions/cc
- Coverage Area (installed on 9ft ceiling): 1,500 sqft
- Average Ion Density in Coverage Area: >20,000 ions/cc (combined +/- ions)
- Airflow Capacity: 225 CFM (default med setting)
- Sound Level in dB(A) (L/M/H): 34 / 37 / 38 dB(A) at 2 meters
- Noise Criterion: NC-34
- Unit Dimensions: 23.75" L x 23.75" W x 7.1" H (3.2" H below ceiling)
- Weight: 11.5 lbs
- Input Voltage (standard): 120 – 240 VAC
- Input Voltage (optional): 277 VAC or 347 VAC - using separate optional transformers
- Power Consumption: 12 W (standard operation), 15 W (cleaning cycle)
- Frequency: 50/60 Hz
- Electric Approvals: UL, cUL
- Compliance & Certifications: UL 867, UL 2998, CARB
- Temperature Range: 32°F – 104°F
- Humidity Range: 20 – 90% RH (non-condensing)



[BUY NOW](#)

IONIZATION SYSTEMS

[Click for more info on Soft Ionization](#)

DM-2® | AUTO-CLEANING NPBI® SOFT IONIZATION SYSTEM

The DM-2® is the auto-cleaning needlepoint bipolar air ionization system designed for indoor duct mounting, delivering ions where you need them.

SPECIFICATIONS

- Ionizer Total Ion Output: 200M ions/cc
- Airflow Capacity: 2,400 CFM or up to 6 tons
- Unit Dimensions: 3.75" Dia x 1.75" L (in-duct) / 5.75" Dia x 3.75" L (overall)
- Unit Weight: 1.8 lbs
- Input Voltage (standard): 24 VAC/VDC, 110 – 240 VAC
- Input Voltage (optional): 277 VAC - with PS-2 power supply
- Power Consumption: 11 W (standard operation), 14 W (cleaning cycle)
- Frequency: 50/60 Hz
- Electric Listings: UL, cUL
- Alarm Contact Rating: 250 VAC / 1 A, N.O. "dry" contact
- Compliance & Certifications: UL 2998, UL 867, CARB
- Temperature Range: -20°F – 140°F
- Humidity Range: 0 – 100% RH



[BUY NOW](#)

IONIZATION SYSTEMS

[Click for more info on Soft Ionization](#)

CI-2® | AUTO-CLEANING NPBI® SOFT IONIZATION SYSTEM

The CI-2® is an auto-cleaning, no maintenance, needlepoint bipolar air ionization system designed to fit where traditional air ionizers don't, including fan coils, heat pump PTACs, ductless mini splits, ceiling cassettes, ducted modules, and traditional split systems and air handlers up to 2,400 CFM.

SPECIFICATIONS

- Ionizer Total Ion Output: >160M ions/cc
- Airflow Capacity: 0 – 2,400 CFM or up to 6 tons
- Unit Dimensions: 4.2" L x 1.1" W x 2.6" H
- Unit Weight: 0.37 lbs
- Input Voltage (standard): 24 VAC, 12 – 36 VDC
- Input Voltage (optional): 110 – 277 VAC - with PS-2 power supply
- Power Consumption: 4 W (standard operation), 7 W (cleaning cycle)
- Frequency: 50/60 Hz
- Electric Listings: UL, cUL
- Alarm Contact Rating: 125 VAC / 300mA, N.O. "dry" contact
- Compliance & Certifications: UL867, UL 2998, UL 2043, CARB
- Temperature Range: -20°F – 140°F
- Humidity Range: 0 – 100% RH

[BUY NOW](#)



IONIZATION SYSTEMS

[Click for more info on Soft Ionization](#)

GPS-DM48™-AC | DUCT-MOUNTED AUTO-CLEANING SYSTEM

The GPS-DM48™-AC is a lightweight, duct-mounted needlepoint bipolar ionization (NPBI™) system. The maintenance-free unit is designed for indoor or outdoor duct mounting and can handle up to 4,800 CFM or 12 tons.

SPECIFICATIONS

- Ionizer Total Ion Output: >400M ions/cc
- Airflow Capacity: 0 – 4,800 CFM or up to 12 tons
- Unit Dimensions: 3.75" Dia x 5.25" L (in-duct) / 6.5" Dia x 7.5" L (overall)
- Unit Weight: 2.31 lbs
- Input Voltage: 24 – 240 VAC
- Power Consumption: 12 W
- Frequency: 50/60 Hz
- Electric Listings: UL, cUL
- Alarm Contact Rating: 125 VAC / 300mA, N.O. "dry" contact
- Compliance & Certifications: UL 2998, UL867, UL 2043, CARB
- Temperature Range: -20°F – 140°F
- Humidity Range: 0 – 100% RH

[BUY NOW](#)



IONIZATION SYSTEMS

[Click for more info on Soft Ionization](#)

GPS-FC24™-AC | AUTO-CLEANING SOFT IONIZATION SYSTEM

Auto-cleaning, lightweight needlepoint bipolar ionization (NPBI®) system that handles up to 2,400 CFM or 6 tons. Designed for multiple mounting options including fan inlet, interior duct walls or floors.

SPECIFICATIONS

- Ionizer Total Ion Output: >300M ions/cc
- Airflow Capacity: 0 – 2,400 CFM or up to 6 tons
- Unit Dimensions: 7.9" L x 1.1" W x 5.0" H
- Unit Weight: 1.25 lbs
- Input Voltage: 24 – 240 VAC
- Amps: 0.17 – 0.017 A (operating) / 0.33 – 0.03 A (cleaning cycle)
- Power Consumption: 4 W (standard operation), 8 W (cleaning cycle)
- Frequency: 50/60 Hz
- Electric Listings: UL, cUL
- Alarm Contact Rating: 125 VAC / 300mA, N.O. "dry" contact
- Compliance & Certifications: UL 2998, UL867, UL 2043, CE, CARB
- Temperature Range: -20°F – 140°F
- Humidity Range: 0 – 100% RH



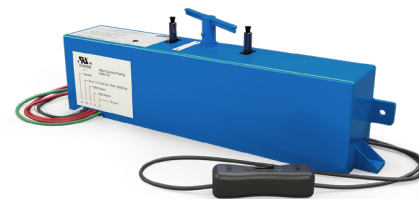
[BUY NOW](#)

GPS-FC48™-AC | AUTO-CLEANING SOFT IONIZATION SYSTEM

Auto-cleaning, lightweight NPBI® systems that handles up to 4,800 CFM or 12 tons. Designed for multiple mounting options including fan inlet, interior duct walls or floors.

SPECIFICATIONS

- Ionizer Total Ion Output: >400M ions/cc
- Airflow Capacity: 0 – 4,800 CFM or up to 12 tons
- Unit Dimensions: 11.1" L x 1.84" W x 3.52" H
- Unit Weight: 1.32 lbs
- Input Voltage: 24 – 240 VAC
- Amps: 0.41 – 0.041 A
- Power Consumption: 10 W
- Frequency: 50/60 Hz
- Electric Listings: UL, cUL
- Alarm Contact Rating: 250 VAC / 1 A, N.O. "dry" contact
- Compliance & Certifications: UL 2998, UL867, UL 2043, CE, CARB
- Temperature Range: -20°F – 140°F
- Humidity Range: 0 – 100% RH



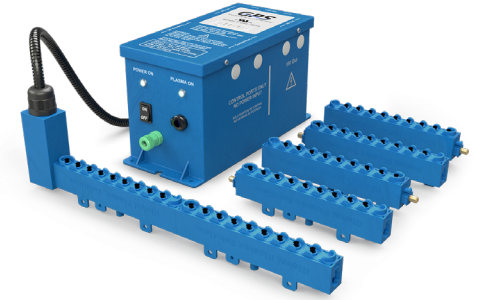
[BUY NOW](#)

IONIZATION SYSTEMS

[Click for more info on the GPS-iMod®](#)

GPS-IMOD® | MODULAR IONIZATION AIR PURIFICATION DEVICE

The patented GPS-iMOD is a modular NPBI® soft ionization system that is field assembled to provide coverage across coil widths in 6-inch increments. It keeps coils cleaner and systems efficient. Save energy and reduce labor by keeping your coils cleaner longer. Simple, affordable, and efficient; get more out of your system, and your budget, with GPS-iMod®.



SPECIFICATIONS

- Ionizer Total Ion Output: >140M ions/cc per inch of bar
- Power Unit Dimensions: 9" L x 3.25" W x 4.75" H
- Power Unit Weight: 4.63 lbs
- Ionizer Bar Dimensions: 0.75" W x 1.6" H, Length = per 6" section + 1.2" (144" max)
- Ionizer Bar Weight: 0.24 lbs per 6" section
- Input Voltage: 24/120/208 – 240 VAC
- Amps: 0.5/0.12/0.065 A
- Power Consumption: 15 W
- Frequency: 50/60 Hz
- Electric Approvals: UL, cUL
- Power Entry: UL Listed, Line Cord with 3-Prong Plug
- Compliance & Certifications: UL 2998, UL867, IAQP, OSHPD Seismic (OSP), CE, CARB
- Temperature Range: -20°F – 140°F
- Humidity Range: 0 – 100% RH

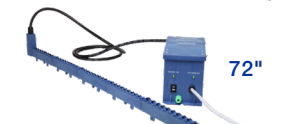
GPS-IMOD-30-SNAP

[BUY NOW](#)



GPS-IMOD-72-SNAP

[BUY NOW](#)



GPS-IMOD-78-SNAP

[BUY NOW](#)

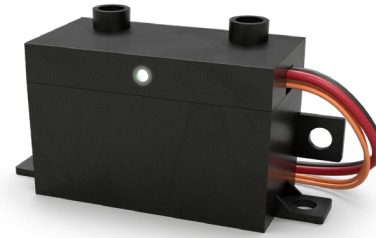


IONIZATION SYSTEMS

[Click for more info on Soft Ionization](#)

GPS-FC-3-BAS | SOFT IONIZATION SYSTEM

The GPS-FC-3-BAS unit is designed to be mounted inside of fan coils, heat pumps, PTACs, ductless mini-splits and air handlers up to 3,200 CFM or 8 tons. It's compact size and simple mounting requirement allows it to be mounted almost anywhere in just a few minutes.



SPECIFICATIONS

- Ionizer Total Ion Output: >350M ions/cc
- Airflow Capacity: 0 – 3,200 CFM or up to 8 tons
- Unit Dimensions: 2.6" L x 1.9" H x 1.3" D
- Unit Weight: 0.23 lbs
- Input Voltage: 24 VAC/VDC
- Power Consumption: 1.2 W
- Frequency: 50/60 Hz
- Electric Listings: UL
- Alarm Contact Rating: 24 VAC / 0.1A, N.O. "dry" contact
- Compliance & Certifications: UL 2998, UL867, UL 2043, CE, CARB
- Temperature Range: -20°F – 160°F
- Humidity Range: 0 – 100% RH

[BUY NOW](#)

ACCESSORIES

[Click for more info on Accessories](#)

PS-2® | POWER SUPPLY

The PS-2 is a single power transformation solution for compatible GPS ionizer products. Made in the USA with U.S. and global parts.



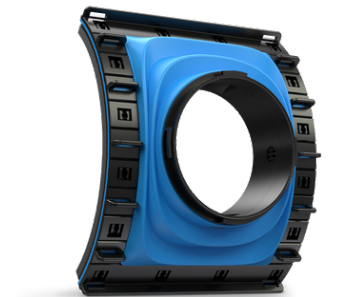
SPECIFICATIONS

- Unit Dimensions: 7.4" L x 1.6" T x 2.4" W
- Unit Weight: 0.45 lbs
- Input Voltage: 110 – 277 VAC
- Output Voltage: 24 DC
- Frequency: 50/60 Hz
- Electric Approvals: UL, cUL
- Compliance & Certifications: UL 1310 (Class 2 Power Unit)

[BUY NOW](#)

DM-S® | DUCT-MOUNTED SADDLE

The DM-S is a single adaptable saddle solution for installing the GPS® DM-2® onto varying round duct diameters of 6" and up. The DM-S saddle installation accessory is sold separately from NPBI® systems.



SPECIFICATIONS

- Unit Dimensions: 2.0" L x 6.5" H x 8.5" W
- Unit Weight: 0.5 lbs

[BUY NOW](#)

ACCESSORIES

[Click for more info on Accessories](#)

GPS-IMEASURE-D | DUCT-MOUNTED ION METER

The GPS-IMEASURE-D ion detector is permanently mounted in the duct downstream of any GPS ionization device.

It measures ion levels in real time and reports back to a BAS. It includes three sensitivity levels, 20,000/200,000/2,000,000 ions/cc, that can be set based on the application and in-duct location.

[LEARN MORE](#)



GPS-IDETECT-P | DUCT-MOUNTED ION METER

The GPS-IDETECT-P is a plenum-mounted ionization detector that can confirm the output from the GPS-iMOD® System.

The GPS-IDETECT-P provides the ability to monitor ionization status in a plenum to confirm that the ionization equipment installed is working properly. The sensor is designed for duct mounting.

[BUY NOW](#)



GPS-IMEASURE | WALL-MOUNTED ION METER

The GPS iMEASURE is the first commercially available ion detector that can be permanently mounted in the space to measure ion levels in real time and report back to a BMS.

HIGHLIGHTS

- Auto Calibration
- Auto Zero
- 0 – 10 VDC Output for BAS Monitoring 24/7
- Watchdog Timer
- Bi-Color LED
- 0 – 1,000,000 Ions/cc Range

[LEARN MORE](#)



ACCESSORIES

[Click for more info on Accessories](#)

GPS-NEMA4-OE | NEMA 4X CONTROL PANEL

The GPS-NEMA4-OE is a NEMA 4x-rated fiberglass enclosure designed to house one GPS-iMOD power supply.

The panel adds a superior finished look to any project while providing the required protection against foreign substances, such as water and dust, when power supplies are mounted in non-NEMA 1 rated environment.

[LEARN MORE](#)





Order Online

PreSeason wishlist available on SingleSource®

- 24/7 access to product information
- Real-time inventory and pricing
- Place orders anytime, anywhere

Get started in 3 simple steps!

1. Download our new App
2. Login to your SingleSource® account or request an account from home screen
3. Start placing orders online

What can SingleSource® do for you?

24/7 ACCESS

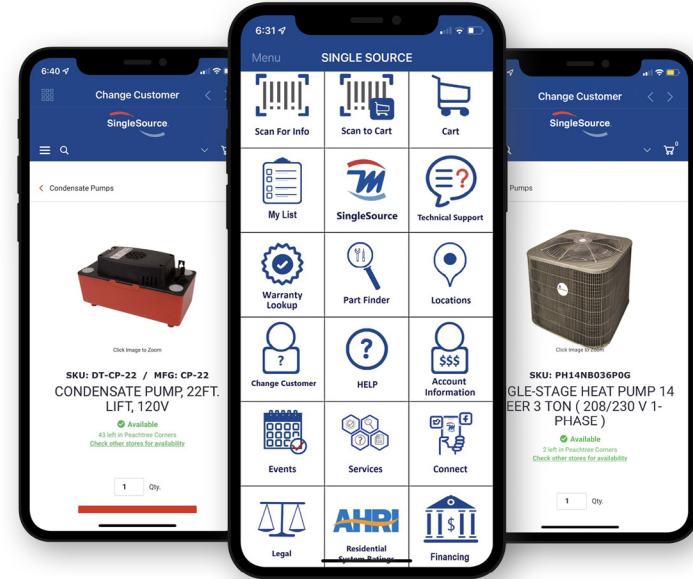
- Place orders anytime, anywhere
- Check local inventory and pricing without making a phone call
- Never wait on hold

PRODUCT DATA

- Fast and easy product look-up
- Access product manuals, replacement part lists, and technical specifications
- Search all parts, supplies and equipment with ease

JOB COSTING

- Attach purchase order numbers to web orders and keep your jobs organized under your account
- Create new wishlists for items you order all the time
- Upload your orders as spreadsheets
- Search order history fast and easy



DOWNLOAD THE APP



MOBILE ACCESS

- Built for desktop, mobile and tablet compatibility
- Optimized for any device to drive your business on the go
- Search local inventory based on your geolocation

RELIABILITY & CONTROL

- Tested to enhance your business work-flow
- Create admin accounts for your employees based on their role and control their individual access

LOGISTICS

- Know what you're getting, where it's coming from, and when you'll get it
- See product availability at all Mingledorff's locations
- Avoid shipping fees with in-store pickup options or request delivery during checkout

41 LOCATIONS THROUGHOUT THE SOUTHEAST TO SERVE YOU

Pricing, availability and product information available 24/7 at singlesource.mingledorffs.com.

Location	Phone	Address
Albany	(229) 432-5254	205 Baldwin Dr. Albany, GA 31707
Anniston	(256) 241-3026	105 E. D St. Anniston, AL 36201
Athens	(706) 548-4019	105 Whitetail Way Bogart, GA 30622
Atlanta	(404) 875-7755	1290 Tacoma Dr. Atlanta, GA 30318
Auburn	(334) 734-8011	2295 1st Ave. Opelika, AL 36801
Augusta	(706) 651-1950	3618 Wrightsboro Rd. Augusta, GA 30909
Birmingham	(205) 250-7714	516A 31st St. N Birmingham, AL 35203
Braselton – MEC	(770) 967-3263	5456 Dalton Ct. Braselton, GA 30517
Brunswick	(912) 265-5193	275 Rose Dr. Brunswick, GA 31520
Columbus	(706) 322-3870	6201 West Hamilton Park Dr. Columbus, GA 31909
Conyers	(770) 918-9132	335 Gee's Mill Business Pkwy. Conyers, GA 30013
Cumming – MEC	(770) 781-5533	2570 Business Dr. Cumming, GA 30040
Dothan	(334) 836-1035	205 Wedgewood Dr. Dothan, AL 36303
Forest Park	(404) 361-2474	5158 Kennedy Rd. Suite B&C Forest Park, GA 30297
Fort Walton	(850) 244-2017	76 Beal Pkwy. SW Ft. Walton Beach, FL 32548
Gainesville	(770) 297-9335	2472 Hilton Dr. Gainesville, GA 30501
Gulf Shores	(251) 968-2660	820 Commerce Dr. Gulf Shores, AL 36542
Hardeeville	(843) 867-2143	132 Red Oaks Way Ridgeland, SC 29936
Hattiesburg	(601) 579-9670	1851 Lincoln Rd. Hattiesburg, MS 39402
Hilton Head	(843) 689-3404	21-A Hunter Rd. Hilton Head, SC 29926
Huntsville	(256) 859-2691	391 Nick Fitchheard Rd. Huntsville, AL 35806
Lawrenceville	(678) 442-1060	2111 Cedar Rd. Bldg. A Lawrenceville, GA 30043

Location	Phone	Address
Lawrenceville – MEC	(770) 963-6226	111-B Tanner St. Lawrenceville, GA 30046
Lithia Springs	(770) 948-3451	320 Thorton Rd. #106 Lithia Springs, GA 30122
Loxley	(251) 964-2707	30020 County Rd. 49 Loxley, AL 36551
Macon	(478) 474-8544	5527 Thomaston Rd. Macon, GA 31220
Marietta	(770) 426-0551	1060-D Triad Ct. Marietta, GA 30062
Marietta – MEC	(678) 354-1174	1050 Industrial Park Dr. Suite A Marietta, GA 30062
Mobile	(251) 476-6285	5522 W Commerce Blvd. Mobile, AL 36619
Montgomery	(334) 262-4855	861 Plantation Way, Bldg A Montgomery, AL 36117
Muscle Shoals	(256) 383-6904	107 Commerce St. Muscle Shoals, AL 35661
Newnan	(770) 239-2105	70 Enterprise Ct. Newnan, GA 30265
Ocean Springs	(228) 497-5090	5717 Suntech Dr. Sunplex Ind. Park Ocean Springs, MS 39564
Panama City	(850) 913-0585	800 W 13th St. Panama City, FL 32401
Peachtree Corners	(770) 239-2100	6675 Jones Mill Ct. Peachtree Corners, GA 30092
Pensacola	(850) 438-1005	4405 North Palafox St. Pensacola, FL 32505
Savannah	(912) 232-1228	103 Central Junction Blvd. Savannah, GA 31405
Statesboro	(912) 764-8841	251 West Parrish St. Statesboro, GA 30458
Tuscaloosa	(205) 632-7176	5030 Old Montgomery Hwy Tuscaloosa, AL 35405
Valdosta	(229) 245-8200	363 Connell Rd. Valdosta, GA 31602
Warner Robins	(478) 953-3727	110 Byrd Way Warner Robins, GA 31088

©2025 Mingledorff's, Inc. All rights reserved. | REV: 12022025



All information provided in this catalog is for informational purposes only and is subject to change without notice. While we strive for accuracy, we do not guarantee the completeness, reliability, or currentness of the content. Product dimensions and technical data should be verified with the manufacturer or sales team prior to ordering.